

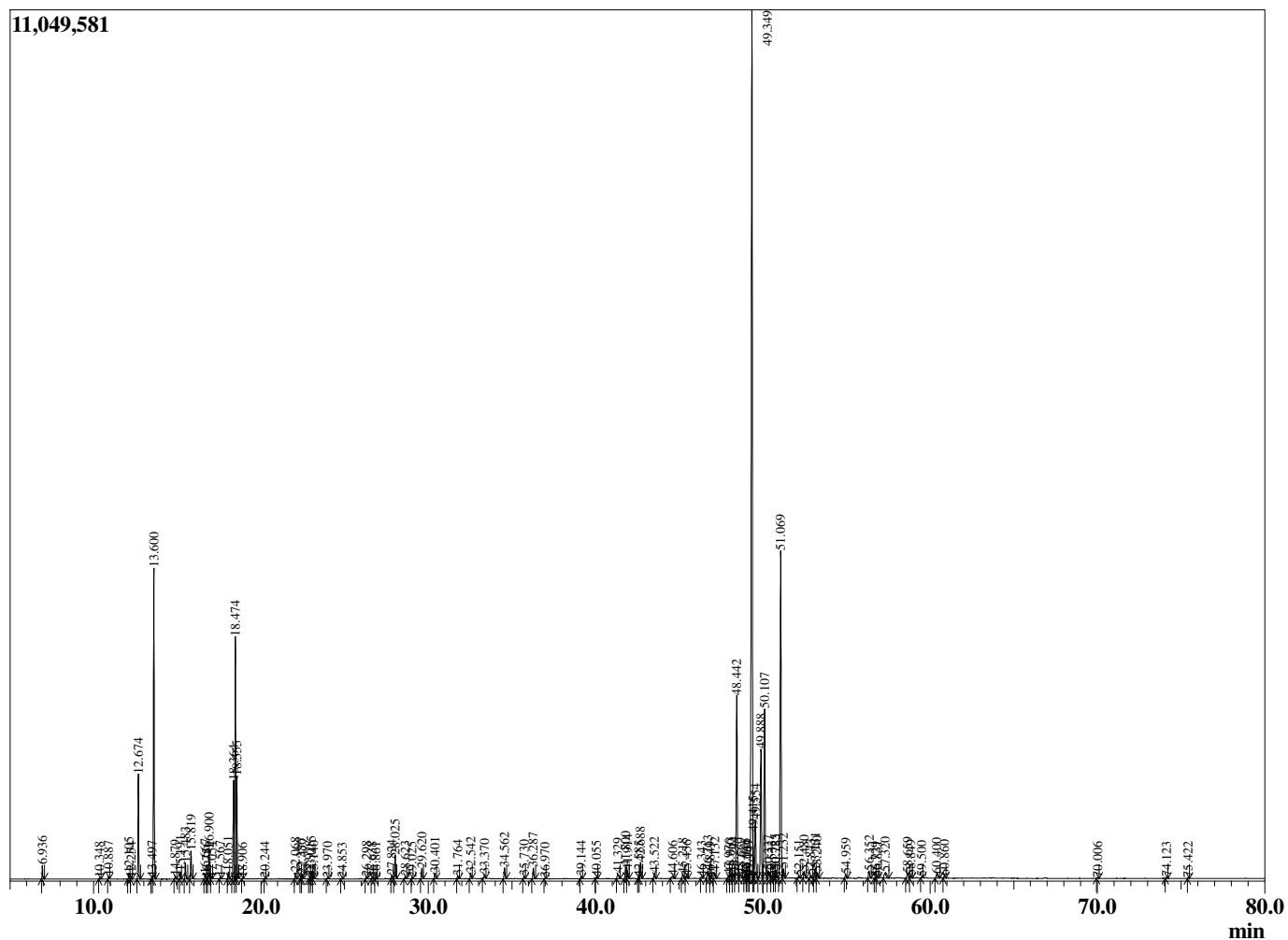
Sample Information

Sample Type : Essential Oil  
 Sample Name : Zingiber officinale

Ginger Cochin  
 Lot#CHZ20-ZC  
 Country: China



Chromatogram Zingiber officinale



R.Time	Name	Peak Report TIC	Area%
6.936	Hexanal		0.27
10.348	2-Heptanone		0.04
10.887	2-Heptanol		0.06
12.105	Tricyclene		0.14
12.254	alpha-Thujene		0.04
12.674	alpha-Pinene		2.46
13.497	alpha-Fenchene		0.06
13.600	Camphene		7.60
14.879	Sabinene		0.08
15.191	beta-Pinene		0.19
15.483	6-Methyl hept-5-en-2-one		0.43
15.819	Myrcene		0.73
16.667	Octanal		0.12
16.756	Pseudolimonene		0.03
16.900	alpha-Phellandrene		0.82
17.054	delta-3-Carene		0.03
17.567	alpha-Terpinene		0.05
18.051	para-Cymene		0.20
18.364	Limonene		2.74
18.474	beta-Phellandrene		6.80
18.555	1,8-Cineole		2.59
18.906	Unidentified		0.02
20.244	gamma-Terpinene		0.03
22.068	Terpinolene		0.17
22.386	2-Nonanone		0.10
22.477	Rosefuran		0.13
22.928	Unidentified		0.06
23.015	Linalool		0.21
23.140	2-Nonanol		0.07
23.970	Unidentified		0.04
24.853	Unidentified		0.03
26.298	Camphor		0.05
26.638	Citronellal		0.05
26.861	trans-beta-Terpineol		0.04
27.824	Isoborneol		0.10
28.025	Borneol		0.73
28.623	Terpinen-4-ol		0.07
29.025	Unidentified		0.02
29.620	alpha-Terpineol		0.36
30.401	Decanal		0.19
31.764	Citronellol		0.09
32.542	Neral		0.17
33.370	Geraniol		0.14
34.562	Geranial		0.34
35.730	Bornyl acetate		0.08
36.287	2-Undecanone		0.36
36.970	Unidentified		0.02
39.144	delta-Elementene		0.08
40.055	Citronellyl acetate		0.05
41.329	Cyclosativene		0.23
41.800	alpha-Copaene		0.40
41.914	Geranyl acetate		0.26
42.585	Unidentified		0.04
42.688	beta-Elementene		0.56
43.522	Sesquithujene isomer		0.19
44.606	trans-beta-Caryophyllene		0.13

R.Time	Name	Area%
45.218	gamma-Elemene	0.18
45.456	trans-alpha-Bergamotene	0.09
46.343	Aromadendrene	0.07
46.713	(E)-beta-Farnesene	0.34
46.849	alpha-Humulene	0.02
47.132	Alloaromadendrene	0.19
47.976	Unidentified	0.12
48.063	trans-Cadina-1(6),4-diene	0.22
48.244	gamma-Curcumene	0.20
48.442	Ar-Curcumene	6.36
48.669	beta-Chamigrene	0.20
48.946	beta-Selinene	0.11
49.064	Unidentified	0.05
49.147	Valencene	0.07
49.349	alpha-Zingiberene	32.20
49.415	alpha-Selinene	0.74
49.554	trans-Murrola-4(14),5-diene	2.12
49.888	(E,E)-alpha-Farnesene	4.42
50.107	beta-Bisabolene	6.10
50.327	Unidentified	0.32
50.533	Unidentified	0.05
50.725	delta-Amorphene	0.23
50.783	(-)-alpha-Panasinsen	0.28
51.069	beta-Sesquiphellandrene	11.40
51.232	(E)-gamma-Bisabolene	0.32
52.151	Unidentified	0.08
52.480	alpha-Elemol	0.23
52.843	cis-Sesquisabinene hydrate	0.11
53.131	Germacrene B	0.33
53.240	(E)-Nerolidol	0.21
54.959	trans-Sesquisabinene hydrate	0.14
56.352	cis-Zingiberenol	0.26
56.729	Unidentified	0.03
56.831	10-epi-gamma-Eudesmol	0.04
57.320	Unidentified	0.31
58.659	alpha-Eudesmol	0.25
58.849	Unidentified	0.09
59.500	beta-Bisabolol	0.03
60.400	Unidentified	0.23
60.860	Unidentified	0.09
70.006	Unidentified	0.02
74.123	Unidentified	0.04
75.422	Unidentified	0.02
		100.00